



GENERAL PRICE LIST

SPRING / SUMMER 2018

VALID FROM 1ST APRIL - 30TH SEPTEMBER 2018



**MANUFACTURING
EXCELLENCE
SINCE 1962**





GENERAL PRICE LIST

SPRING / SUMMER 2018

INDEX

BALE FEEDERS & STRAW SPREADERS		14 & 15
BALL HITCHES		6
BRINE SPRAYERS		18
BROOMEX PUSH BROOMS		12 & 13
FERTILISER SPREADERS	Mounted	10
	Trailed	6
FINISHING MOWERS		7
FLAIL MOWERS	ATV	5
	Compact tractor	7 & 8
HEDGE CUTTERS		9
TIPPING TRAILERS		10
LANDMASTER ROTARY CULTIVATOR		13
LOGSPLITTERS	Mounted	13
OUTFRONT FLAIL MOWERS		8
Paddock CLEANERS	ATV	5 & 11
	PTO	11
ROLLERS		6
ROTARY MOWERS	ATV	4
ROTARY SLASHERS		7
SALT SPREADERS SNOWEX		15 - 17
SALT SPREADERS WESSEX		18
SNOW BLADES		19
SPRAYERS	ATV	6
SWEEPER COLLECTORS	ATV	11
	Mounted	11
TOPPERS	ATV	4
VERGE MOWERS		8



2 YEAR WARRANTY

Selected products are available with a 2 year manufacturers warranty. These machines come with a standard one year warranty, and a further 1 year is available at no cost by simply completing an online registration via the website.

www.wessexintl.com/warranty-registration/



AFTER-SALES

SERVICE & PARTS



AFTER-SALES & SERVICE



DEALER NETWORK

WESSEX AFTER-SALES & SERVICE BACK-UP

At Wessex International, our care for the customer does not stop at the time of machine purchase. Our dedicated after-sales team with their wealth of experience are here to tend to your needs throughout the working life of the machine. Whether it's machine operation, advice on application, or a technical question over maintenance, we're here to help.

DEALER NETWORK

Wessex products are sold exclusively through the Wessex UK dealer and global distributor network. Our dealers have the market knowledge and experience to recommend the correct product for your application, and their in-house service and maintenance department provides a local centre for all your after service requirements.



SPARE PARTS

SPARE PARTS

Only genuine Wessex spare parts should be used to maintain optimum performance from your Wessex machine. To minimise costly machine downtime, parts orders are dispatched daily to our professional dealer network by next-day carrier service (UK mainland), and 2 day for UK Highlands & Islands. If ordered before 1:00pm, parts will be dispatched the same day (subject to availability). **Our online parts store is open 24 hours a day, 365 days a year**

www.wessexintl.com/parts. Order your parts from your mobile or computer and we'll take care of the rest.

T: 01264 345878

F: 01264 345880

E: parts@wessexintl.com

Take advantage of our...



EXPRESS

DISPATCH SERVICE

Items with a tick have been included in the **EXPRESS DISPATCH SERVICE**.



Orders confirmed before 12 noon will be dispatched on the same working day on a *48 hour service.

ALL PRICES INCLUDE DELIVERY TO UK MAINLAND ADDRESS

VAT applies to all prices on this list.

(*mainland UK - subject to availability)



ATV RANGE



MODEL SHOWN **AR-120**

AR SERIES ROTARY MOWERS (WA-)

	Engine			
AR-120	12.5 hp B&S	1.20m	£2,955	✓
AR-150	12.5 hp B&S	1.50m	£3,255	✓
AR-180	13.5 hp B&S e/s	1.80m	£4,200	✓
AR-180	17.5 hp B&S e/s	1.80m	£4,450	✓
AR-RWK	Rear wheel kit		£355	



MODEL SHOWN **AT-110**

AT-110 PASTURE TOPPER (WA-)

AT-110	12.5 hp B&S	1.10m	£1,970	✓
	Single bladed topper, self-powered, trailed			

CONTINUED OVERLEAF



(ABOVE) MODEL SHOWN **AF-120**



INSET IMAGE **AFE-120**

AF/AFC/AFE SERIES FLAIL MOWERS (WA-)

AFE-120	13hp B&S	Standard	1.20m	£3,600	✓
AF-120	18hp B&S	Standard	1.20m	£4,620	✓
AF-160	18hp B&S	Standard	1.60m	£5,300	✓

Options (In lieu of standard equipment)

Optional heavy-duty flail for AF-120	£250
Optional heavy-duty flail for AF-160	£300
AF-RWK-120 Rear wheels (AF/AFC 120 only)	£300
AF-LGP LGP wheels	£295
2360XL Extended kill switch for UTV's	£35



MODEL SHOWN **DUNG BEETLE**

DUNG BEETLE Paddock CLEANERS (WC-)

MTX-120-E Self-powered for ATV's 4 X 4 etc	1.20m	£4,440
--	-------	--------

CONTINUED OVERLEAF

TRAILED FERTILISER SPREADERS (CE-)

FS-270-TP	Trailed plastic hopper spreader with ball hitch and pin hitch towing eye	270 ltr	£1,150 ✓
-----------	--	---------	----------

For salt spreaders, see the Winterline product range on page 19.



MODEL SHOWN **FS-270-TP**



MODEL SHOWN **SS-608P**

SPRAYERS (WA-)

SS-604	c/w hand lance & hose	£230 ✓
SS-608-P	c/w pressure control, hand lance & hose	£390 ✓
SS-618-P	c/w pressure control, hand lance & hose	£435 ✓
B-15	boom	1.50m £130 ✓
B-20	boom	2.00m £135 ✓
B-30	boom	3.00m £160 ✓
B-30-HR	boom c/w hedgerow nozzles	3.00m £225 ✓
B-MNB	brine spraying boom	1.50m £205 ✓



MODEL SHOWN **LAND ROLLER**

LAND ROLLER (CE-)

LR-150	Ball or clevis hitch (both supplied)	1.50m	£1,110 ✓
--------	--------------------------------------	-------	----------

ATV BALL HITCHES (WA-)

TBALL-19	19mm thread option (box of 25)	£200 ✓
----------	--------------------------------	--------



COUNTRYLINE RANGE



MODEL SHOWN **CM-150**

FINISHING MOWERS (CE-)

CM-150	Finishing mower	1.50m	£2,200 ✓
CM-180	Finishing mower	1.80m	£2,440 ✓



MODEL SHOWN **SCRUBMASTER**

WESSEX SCRUBMASTER ROTARY SLASHER (WS-)

SM-66	c/w chain cutters	1.70m	£4,400
SM-66	c/w blade cutters	1.70m	£4,950
SM-CK	Blade to chain conversion kit		£300
SM-BK	Chain to blade conversion kit		£830
1381A	Over-run clutch on pto shaft		£375



MODEL SHOWN **WFM-145**

FLAIL MOWERS (CE-)

(Supplied with hammer flails unless stated.)

WFM-115	Flail mower c/w Y-Flails	1.15m	£2,450 ✓
WFM-130	Flail mower c/w man side shift & Y-flails	1.30m	£2,550 ✓
WFM-145	Flail mower c/w hyd side shift	1.45m	£2,650 ✓
WFM-175	Flail mower c/w hyd side shift	1.75m	£2,940 ✓
WFM-220	Flail mower c/w hyd side shift	2.20m	£3,400 ✓

CONTINUED OVERLEAF



MODEL SHOWN **FRX-150-H-R**

FRX OUTFRONT FLAIL MOWERS (WP-)

FRX-150-K	PTO driven for Kubota	1.50m	£4,670
FRX-150-JD	PTO driven for John Deere	1.50m	£4,995
FRX-150-S	PTO driven for Shibaura/New Holland	1.50m	£4,870
FRX-150-H-S	Hydraulically driven for Stiga Titan	1.50m	£4,580
FRX-150-H-R	Hydraulically driven for Ransomes HR-300	1.50m	£4,685
FRX-RA	Ransomes HR-300 mounting arms		£495
FRX-150-T	Hydraulically driven to suit Toro 3400	1.50m	£4,580



MODEL SHOWN **ZME-155**

OFF-SET VERGE MOWERS (FI-)

ZME-125	Verge Mower with 'Y' Flails	1.25m	£5,640
ZME-155	Verge Mower with 'Y' Flails	1.55m	£5,980
	Floating valve kit		£790

CONTINUED OVERLEAF



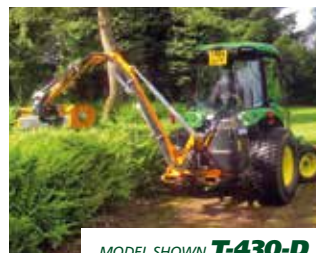
MODEL SHOWN **CHT-120**



MODEL SHOWN **T-350-S**

HEDGE CUTTERS - SICKLE BAR HEAD (FI-)

CHT-120	1.2m cutter bar trimmer with cable controls	£5,550	✓
T-350-S	Reach trimmer, 1.5m cut	£6,150	
T-350-SI	Reach trimmer, 1.5m cut. Complete with hydraulic tank and pump, joystick controls	NEW £11,540	



MODEL SHOWN **T-430-D**



MODEL SHOWN **T-500-G**

HEDGE CUTTERS - FLAIL HEAD (FI-)

T-320-A	3.2m reach hedge cutter with cable controls & Y Flails	£10,100	✓
T-320-A-E	As above with joystick controls	£13,500	
Options	Oil cooler	£950	
T-380-D	3.8m reach hedge cutter with cable controls & Bootie flails	£10,570	✓
T-380-D-E	3.8m reach hedge cutter with joystick controls & Bootie flails	£13,750	
T-430-D	4.3m reach hedge cutter with cable controls & Bootie flails	£10,950	✓
T-430-D-E	4.3m reach hedge cutter with Joystick controls & Bootie flails	£13,995	
Options	Oil Cooler	£940	
T-500-G	5.0m reach hedge cutter with cable controls & Y Flails	£16,250	
T-500-G-E	5.0m reach hedge cutter with Ep-Tronic Joystick controls & Y Flails	£20,650	
Options	Extra for Hammer Flails	£340	
	Extra for Hedge Trimming Flails	£110	
	Oil Cooler	£1,075	
	Lift Float	£245	
	Bumper with illumination strip	£645	

CONTINUED OVERLEAF



MODEL SHOWN **1.5T-LGPW**



MODEL SHOWN **1.25T**

TIPPING TRAILERS (WT-)

1.25T	1.25 ton with LGP tyres	£2,320
	T-125-ES Mesh extension sides	£640
1.5T-LGPW	1.5 ton with LGP tyres	£2,820
	EXT-1.5 Mesh extension sides	£780
	LB/1 Lighting board	£95
3.0T-LGPW	3 ton with LGP tyres	£3,330
	EXT-3.0 Mesh extension sides	£890

All trailers fitted with screw jack.



MODEL SHOWN **FS-360-P**

MOUNTED FERTILISER SPREADERS (CE-)

Hopper Capacity

FS-360-P PTO driven spreader c/w plastic hopper 335 ltr £695 ✓

For trailed spreaders, see page 6, for salt spreaders, see the page 18.

CONTINUED OVERLEAF



MODEL SHOWN **MTX-120-E**



MODEL SHOWN **STX-120**

DUNG BEETLE Paddock CLEANERS (WC-)

MTX-120-E	Self-powered for ATV's 4 X 4 etc	1.20m	£4,440
MTX-120-P	PTO driven, trailed	1.20m	£4,470
STX-120	PTO driven, semi-mounted	1.20m	£7,110
STX-180	PTO driven, semi-mounted	1.80m	£8,360



MODEL SHOWN **STC-180**

COLLECTORS (WC-)

MTC-120-E	Self-powered sweeper collector	1.20m	£4,400
MTC-120-P	PTO driven, trailed sweeper collector	1.20m	£4,470
STC-120	Sweeper collector	1.20m	£7,045
STC-120	Flail collector	1.20m	£8,570
STC-120	Scarifier collector	1.20m	£8,495
STC-180	Sweeper collector	1.80m	£8,480
STC-180	Flail collector	1.80m	£10,540
STC-180	Scarifier collector	1.80m	£10,450

All STC models are PTO driven and are fitted with hydraulic high-tip.

OPTION CHANGE KITS

FROM	TO		STC-120		STC-180
Sweeper	Scarifier	OCK 1	£2,050	OCK 8	£2,555
Sweeper	Flail mower	OCK 2	£2,180	OCK 9	£2,780
Scarifier	Flail mower (flails only)	OCK 3	£405	OCK 10	£610
Flail mower	Scarifier (blades only)	OCK 4	£180	OCK 11	£290
Scarifier	Sweeper	OCK 5	£710	OCK 12	£830
Flail mower	Sweeper	OCK 5	£710	OCK 12	£830
Scarifier	Flail mower	OCK 6	£1,995	OCK 13	£2,550
Flail mower	Scarifier	OCK 7	£1,860	OCK 14	£2,380
Flail mower	Paddock sweeper	OCK 16	£670	OCK 15	£900
WC-RT	STC Rotor trolley				£200

CONTINUED OVERLEAF



MODEL SHOWN **BM-240-CMAX** C/W **FSH-400 FORK HITCH**

BROOMEX (PB-)

BM-150-CMAX C-broom with 11 rows of bristles & side arm	1.52m	£1,370	✓✓
BM-180-CMAX C-broom with 11 rows of bristles & side arm	1.83m	£1,515	✓✓
BM-240-CMAX C-broom with 11 rows of bristles & side arm	2.44m	£1,715	✓✓



MODEL SHOWN **BM-240**

BM-150	11 rows of bristles	1.52m	£895	✓✓
BM-180	11 rows of bristles	1.83m	£1,040	✓✓
BM-240	11 rows of bristles	2.44m	£1,240	✓✓



MODEL SHOWN **BP-180**

BP-150	8 rows of bristles	1.52m	£775	✓✓
BP-180	8 rows of bristles	1.83m	£860	✓✓
BP-240	8 rows of bristles	2.40m	£1,045	✓✓

All BroomEx Push Brooms are not assembled and are boxed on delivery.

CONTINUED OVERLEAF

Hitches for BM and C-MAX Brooms

FSH-400	Fork sleeve hitch for 4"/100mm wide Forks	£250	✓✓
FSH-200-A	Fork sleeve hitch for 6"/150mm wide Forks	£435	✓✓
TPH-200	3 point mount (Cat 1 & 2)	£275	✓✓
SQH-200*	Quick hitch for telehandler (JCB QFit/ Cone & Pin /Matbro/Manitou/Merlo 3 piece vertical/Eurohitch)	£320	✓✓

Hitches for BP

TPK-300	3 point mount (Cat 1)	£130	
---------	-----------------------	------	--

Replacement brush kit for BM and C-MAX

BMK-090	Replacement bristles	0.91m	£250	✓✓
BMK-150	Replacement bristles	1.52m	£435	✓✓
BMK-180	Replacement bristles	1.83m	£535	✓✓
BMM-175	C-Max Replacement bristles/rubber kit		£175	✓✓
BMX-175	C-Max High capacity retainers		£475	✓✓

Replacement brush Kit for BP

BPK-090	Replacement bristles	0.91m	£180	✓✓
BPK-150	Replacement bristles	1.52m	£320	✓✓
BPK-180	Replacement bristles	1.83m	£370	✓✓



MODEL SHOWN **LANDMASTER RC-120**

WESSEX LANDMASTER ROTARY CULTIVATORS (CE-)

RC-100	Rotary cultivator	1.0m	£1,550	
RC-120	Rotary cultivator	1.20m	£1,785	✓✓
RC-150	Rotary Cultivator	1.50m	£1,990	✓✓



MODEL SHOWN **LS-100**

LOGSPLITTER (CE-)

LS-100	Tractor mounted 10ton rated	£650	✓✓
--------	-----------------------------	------	----

BALE FEEDERS & STRAW SPREADERS



MANUFACTURING
EXCELLENCE SINCE 1962

HEADSTOCK



BFR-180
ROUND BALE FEEDER

CROSSFIRE
BEDDER ATTACHMENT

BF SERIES ROUND BALE FEEDERS (BF-)



MODE 1
BFR-180 Round bale feeder £5,900



MODE 2
BF-CROSSFIRE Straw spreader unit for fitment to BFR-180 £4,900

CONTINUED OVERLEAF



MODEL SHOWN **SIDERWINDER ATTACHMENT**

MODE 3

BF-SIDERWINDER	Extension conveyor for fitment to BFR-180	£2650
BF-DIVERTER	Diverter valve	POA

Brackets for BFR-180 (BF-)

Bolt-on loader brackets	£385
BF-OSB Super offset loader bracket (up to 800mm offset)	£485
BF-TPL Offset 3 point linkage bracket (up to 500mm offset)	£320

SNOWEX SALT SPREADERS



MODEL SHOWN
SP-575X-1



MODEL SHOWN
SP-1575-1



MODEL SHOWN
SP-1875-1

UTILITY SPREADERS (TS-)

SP-575X-1	Utility spreader complete with vibrator kit	163 ltr	£1,725	✓
SP-1575-1	Utility spreader	163 ltr	£2,985	✓
SP-1875-1	Utility spreader	254 ltr	£3,200	✓

Mounts for SP-575X-1 / 1575-1 Utility Spreaders

TBH-175	Tow bar hitch	£50	✓
UTM-175	Utility mount	£235	✓
FLM-175	Fork Lift Mount	£215	✓
TPM-175	Three point mount (Cat 1)	£265	✓
DRM-175	Drop utility mount	£400	✓
TLR-275	Trailer mount	£515	✓

Mounts for SP-1875-1 Utility Spreader

DSM-175	Dropside truck mount	£325	✓
FSM-175	Fork lift mount	£480	✓
TPM-275	Tractor mount (Cat 1 & 2)	£345	✓
PUH-175	Pick-up truck hitch	£435	✓

Accessories for Utility Spreaders

TRK-1575	Flow restrictor tube (SP-1575-1)	£250
TRK-1875	Flow restrictor tube (SP-1875-1)	£235
BB-PK-275	Battery box kit, for TLR-275 mounting	£525

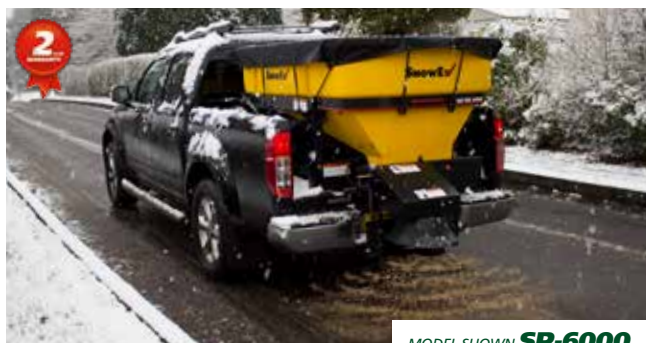
CONTINUED OVERLEAF



MODEL SHOWN **SP-2000**



MODEL SHOWN **SP-3000**



MODEL SHOWN **SP-6000**

V-PRO SPREADERS (TS-) BED MOUNTED

SP-2000	V-Pro spreader	300 ltr	£4,620	✓✓
SP-3000	V-Pro spreader	380 ltr	£4,595	✓✓
SP-6000	V-Pro spreader	800 ltr	£5,450	✓✓

V-PRO HIGHWAY TRAILER

VPT-150	To suit SP-2000 / SP-6000	£2,290
SW-250	Spare wheel & mounting bracket	£140

CONTINUED OVERLEAF



MODEL SHOWN **SP-8500** COMPLETE WITH VMT-250 TRAILER

V-MAXX SPREADERS (TS-) BED MOUNTED

SP-7550	V-Maxx spreader	1200 ltr	£6,600
SP-8500	V-Maxx spreader	1600 ltr	£7,800

V-MAXX HIGHWAY TRAILER

VMT-250	To suit SP-7550 / 8500	£3,350
SW-250	Spare wheel & mounting bracket	£140

ACCESSORIES FOR V-PRO, V-MAXX & SUPERMAXX SPREADERS (TS-)

OFK-020	Optimum Flow Kit (V-Pro)	£330
FFK-020	Free Flow Kit (SP-7550)	£130
TRK-3000	Flow restrictor tube (SP-3000 / 6000)	£260
BB-PK	Battery box kit, complete with battery, charger and flylead (for VMT / VPT trailers)	£610



2 YEAR WARRANTY

Selected products are available with a 2 year manufacturers warranty. These machines come with a standard one year warranty, and a further 1 year is available at no cost by simply completing an online registration via the website.

[www.wessexintl.com/
warranty-registration/](http://www.wessexintl.com/warranty-registration/)

WINTERLINE RANGE



MODEL SHOWN **BS-618**

ATV LIQUID BRINE SPRAYER (WA-)

BS-618	55 litre with hand lance & hose	1.50 ltr	£435
B-MNB	Brine spraying boom	1.50m	£205



MODEL SHOWN **FS-360-P**



MODEL SHOWN **FS-270-TP-WK**

GRANULAR SALT SPREADERS (CE-)

All models c/w winter spreading kit and plastic hopper.

Hopper Capacity

FS-360-P-WK	Mounted PTO salt spreader	335 ltr	£1,005
FS-270-TP-WK	Trailed salt spreader	270 ltr	£1,460

CONTINUED OVERLEAF



MODEL SHOWN **SNOW BLADE**

WESSEX SNOW BLADE (CE-)

SB-150	Snow Blade with front linkage for compact tractor	1.50m	£1,475
SB-190	Snow Blade with front linkage for compact tractor	1.90m	£1,545
SB-HA	Hydraulic angling		£260
SB-BB	Spring break-back protection		£250

Please call our sales office for details.



SINCE 1962 the Wessex name has been synonymous with British built, superb quality machines for the agricultural and groundcare markets. Our equipment is built for demanding applications, where reliability and durability are paramount.

Call us today to locate your nearest dealer.



WESSEX PARTS

WEBSITE

ORDER YOUR WESSEX PARTS ONLINE NOW!

WHY SHOULD YOU TAKE THE PLUNGE?

- ✓ **USUAL DISCOUNT APPLIES**
- ✓ **PAY ON ACCOUNT OR VIA PAYPAL**
- ✓ **CHECK STOCK LEVELS**
- ✓ **VIEW EXPLODED DIAGRAMS**
- ✓ **THE WEBSITE IS OPEN 24 HOURS A DAY, 365 DAYS A YEAR**
- ✓ **HISTORY - SEE WHAT YOU ORDERED AND WHEN (PERFECT FOR RE-ORDERING)**

ORDER ONLINE NOW...



Follow us on:



GO TO
www.wessexintl.com/parts
TO ORDER YOURS NOW



SCAN
THE CODE
TO FIND
OUT MORE



WESSEX INTERNATIONAL Charlton House, Caxton Close,
East Portway Industrial Estate, Andover, Hampshire, SP10 3QN
T: 01264 345870 **F:** 01264 345880 **E:** sales@wessexintl.com

L490. © Wessex International 2018. E&OE. Specifications may change without notice.
Wessex International is a trading name of Wessex International Machinery.

